

Supercoiled DNA Ladder

PRODUCT FORMATION

Components	Specification	Cat. No.
Supercoiled DNA Ladder	250 μ l	MD1014
Supercoiled DNA Ladder	250 μ l \times 5	MD1114

STORAGE

The product can be stored at normal temperature (0-30 $^{\circ}$ C) for half a year; Store at - 20 $^{\circ}$ C for 1 year. It can be transported at normal temperature.

TECHNICAL SUPPORT

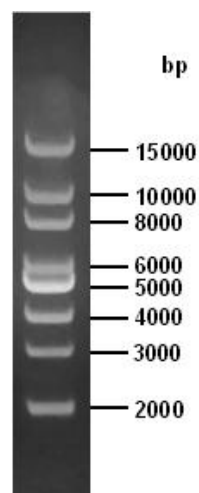
TEL: 400-0099-857

E-MAIL: technical@simgen.cn

INTRODUCTION

Supercoiled DNA Ladder consists of 8 supercoiled plasmid DNA ranging from 2kb to 15kb. Supercoiled DNA Ladder contains 1 \times Loading Buffer, users can apply 5 - 10 μ l in agarose gel electrophoresis directly.

The red and yellow tracking dye in Supercoiled DNA Ladder will not weakened the DNA bands under UV light, better than bromophenol blue and xylene cyanol FF.



PRECAUTION

1. Clear bands can be obtained by applying 5 μ l DNA Ladder when the lane width is less than 5 mm. If the lane is wider, loading volume of DNA Ladder should be increased appropriately.
2. For DNA electrophoresis, agarose purity is of great significance to DNA band definition. Therefore, agarose with good quality should be used and gel concentration of 0.7% ~ 1% is recommended.
3. During agarose electrophoresis, the concentration of agarose is closely associated with the separation of DNA fragments. High agarose concentration is ideal for the separation of the short DNA fragments. While low agarose concentration is ideal to separate the long DNA fragments.