

## DL7000 Ladder

### PRODUCT FORMATION

Components	Specification	Cat. No.
DL7000 Ladder	250 $\mu$ l	MD1020
DL7000 Ladder	250 $\mu$ l $\times$ 5	MD1120

### STORAGE

The product can be stored at normal temperature (0-30 $^{\circ}$ C) for more than three years. If the product is not used for a long period of time, please store at -20 $^{\circ}$ C to prevent the evaporation of water.

### TECHNICAL SUPPORT

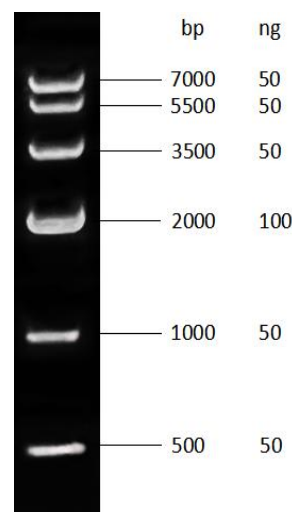
TEL: 400-0099-857

E-MAIL: [technical@simgen.cn](mailto:technical@simgen.cn)

### INTRODUCTION

DL7000 Ladder is composed of 7 individual DNA fragments, presenting 7k, 5.5k, 3.5k, 2k, 1k, 500 bp sharp bands respectively. DL7000 DNA Ladder contains 1 $\times$ Loading Buffer, users can apply 5 - 10  $\mu$ l in agarose gel electrophoresis directly.

The red and yellow tracking dye in DL7000 Ladder will not weakened the DNA bands under UV light, better than bromophenol blue and xylene cyanol FF.



### PRECAUTION

1. Clear bands can be obtained by applying 5  $\mu$ l DNA Ladder when the lane width is less than 5 mm. If the lane is wider, loading volume of DNA Ladder should be increased appropriately.
2. For DNA electrophoresis, agarose purity is of great significance to DNA band definition. Therefore, agarose with good quality should be used and gel concentration of 1% is recommended.
3. During agarose electrophoresis, the concentration of agarose is closely associated with the separation of DNA fragments. High agarose concentration is ideal for the separation of the short DNA fragments. While low agarose concentration is ideal to separate the long DNA fragments.