

## 50 bp DNA Ladder

### PRODUCT FORMATION

Components	Specification	Cat. No.
50 bp DNA Ladder	250 $\mu$ l	MD1001
50 bp DNA Ladder	250 $\mu$ l $\times$ 5	MD1101

### STORAGE

The product can be stored at normal temperature (0-30 $^{\circ}$ C) for more than three years. If the product is not used for a long period of time, please store at -20 $^{\circ}$ C to prevent the evaporation of water.

### TECHNICAL SUPPORT

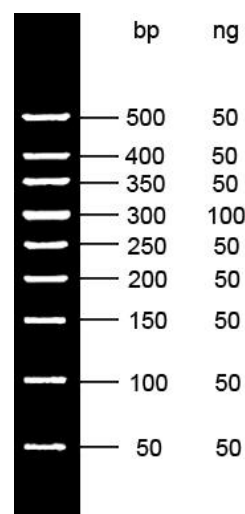
TEL: 400-0099-857

E-MAIL: [technical@simgen.cn](mailto:technical@simgen.cn)

### INTRODUCTION

50 bp DNA Ladder is composed of 9 individual DNA fragments, presenting 500, 400, 350, 300, 250, 200, 150, 100, 50 bp sharp bands respectively. 50 bp DNA Ladder contains 1 $\times$ Loading Buffer, users can apply 5 - 10  $\mu$ l in agarose gel electrophoresis directly.

The red and yellow tracking dye in 50 bp DNA Ladder will not weakened the DNA bands under UV light, better than bromophenol blue and xylene cyanol FF.



### PRECAUTION

1. Clear bands can be obtained by applying 5  $\mu$ l DNA Ladder when the lane width is less than 5 mm. If the lane is wider, loading volume of DNA Ladder should be increased appropriately.
2. For DNA electrophoresis, agarose purity is of great significance to DNA band definition. Therefore, agarose with good quality should be used and gel concentration of 2.5% – 3.0% is recommended.
3. During agarose electrophoresis, the concentration of agarose is closely associated with the separation of DNA fragments. High agarose concentration is ideal for the separation of the short DNA fragments. While low agarose concentration is ideal to separate the long DNA fragments.